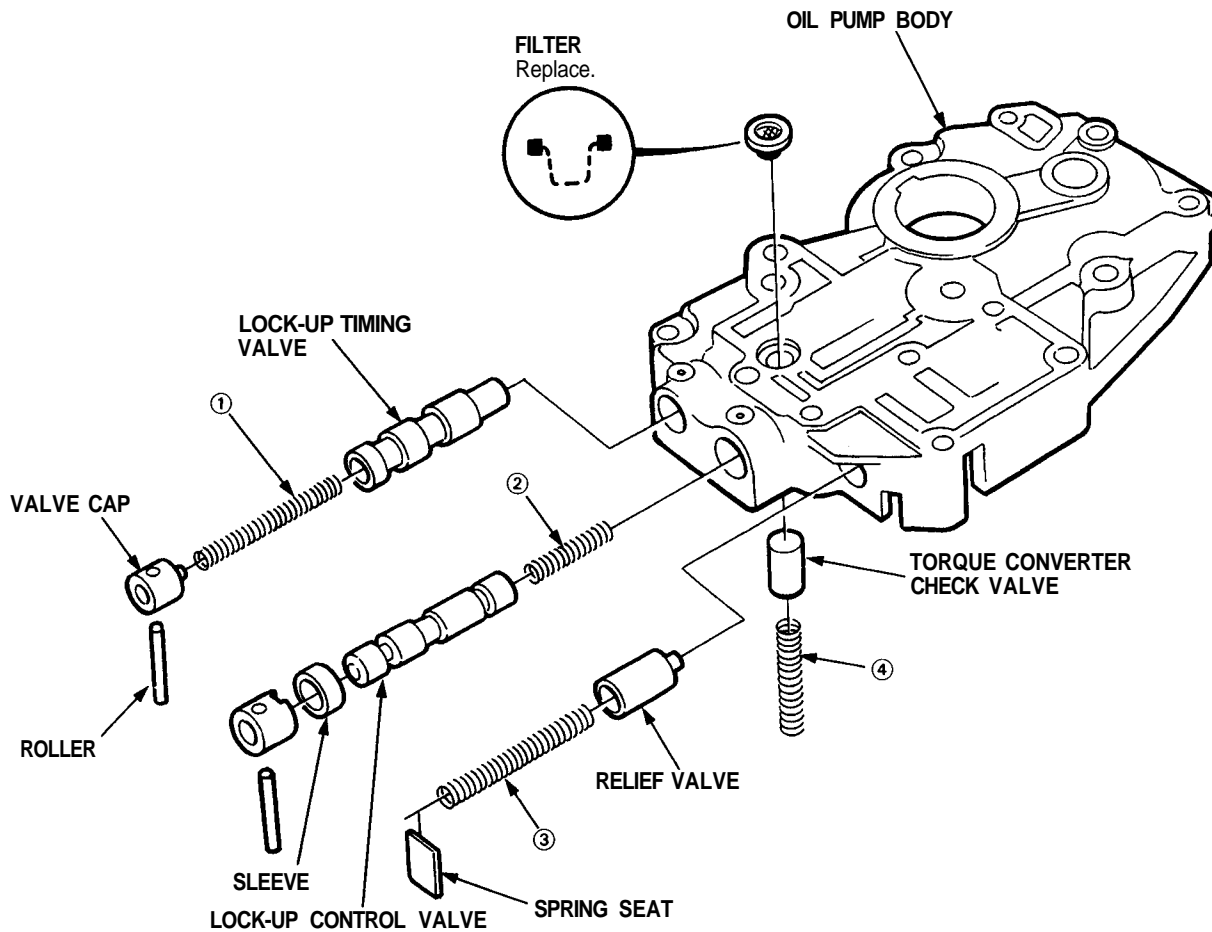


# Oil Pump Body

## Disassembly/Inspection/Reassembly

### NOTE:

- Clean all parts thoroughly in solvent or carburetor cleaner, and dry with compressed air.
- Blow out all passages.
- Replace valve body as an assembly if any parts are worn or damaged.
- Check all valves for free movement. If any fail to slide freely, see Valve Body Repair on page 14-114.
- Coat all parts with ATF before reassembly.



### SPRING SPECIFICATIONS

Unit: mm (in)

No.	Spring	Standard (New)			
		Wire Dia.	O.D.	Free Length	No. of Coils
①	Lock-up timing valve spring	0.8 (0.031)	6.6 (0.260)	61.2 (2.409)	38.5
②	Lock-up control valve spring	0.7 (0.028)	6.6 (0.260)	36.3 (1.429)	14.1
		0.7 (0.028)	6.6 (0.260)	37.5 (1.476)	24.6
		0.7 (0.028)	6.6 (0.260)	38.5 (1.516)	24.6
③	Relief valve spring	0.9 (0.035)	8.4 (0.331)	56.5 (2.224)	22.4
④	Torque converter check valve spring	1.1 (0.043)	8.4 (0.331)	41.8 (1.646)	15.7